



Looking In to Reach Out

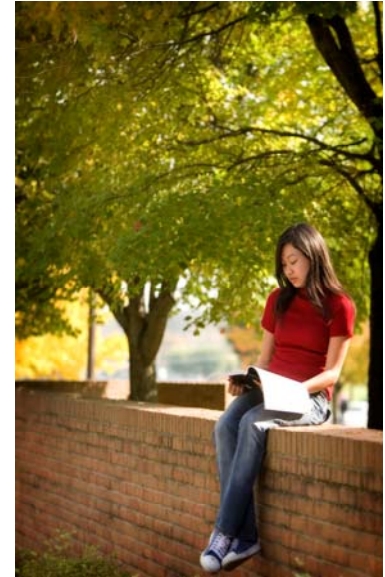
Southern State Community College Strategic Plan 2007-2010

Student Access and Success

Southern State will promote accessibility by continually reviewing outreach efforts, entry processes, convenience, and affordability factors. In addition, establishing viable student support structures and pathways will be imperative to student success.

Goals

- 1.1 Fully implement student success resources on each campus to include orientation, academic and career advising, tutoring, writing/math labs, and transfer advising.
- 1.2 Create pathways for traditional and non-traditional students including dual enrollment, articulations and partnerships with four-year universities and tech prep.
- 1.3 Develop and deliver programs and services that meet the diverse needs of our constituents.
- 1.4 Exercise diligence in reducing the financial barrier that higher education represents to potential student populations.



Maximizing Learning Opportunities

Southern State will maximize learning opportunities by expanding and improving partnerships with business and other education institutions, taking a leadership role in expanding technology access, implementing program evaluation based on need, effectiveness, and efficiencies.

Goals

- 2.1 Effectively use partnerships with businesses and other institutions of higher education to become more responsive to student needs and workforce demands.
- 2.2 Position Southern State as a leader in expanding technology access for our students and the technologically underserved areas of Southern Ohio.
- 2.3 Continuously review and improve Southern State's educational programs in order to maximize efficiency, student learning, and relevance to the job market.

Facilities Improvement and Planning

Operating in a growingly competitive education market, facilities improvement and planning are imperative to the successful future and competitiveness of the institution. Through the development of a master facility plan grounded on the needs of academic programming, financial management based on entrepreneurial principles and well sustained, safe facilities, the college will be well positioned to weather the turbulence of uncertainty regarding state financial support of higher education.

Goals

- 3.1 Develop a six-year facility plan reflective of space, equipment and services.
- 3.2 Sustain effective facilities.
- 3.3 Evaluate alternative sources of revenue.



Teaching and Learning Excellence

A commitment to teaching and learning excellence can be demonstrated through effective training and development activities for faculty and staff, an organizational structure that supports learning and an emphasis on quality communicated through outcomes measurement and the allocation of resources.

Goals

- 4.1 Support and enhance excellence in teaching and learning for full- and part-time faculty and staff through training and development and mentoring programs.
- 4.2 Implement an organizational structure that supports learning.
- 4.3 Demonstrate quality through student learning outcomes assessment.
- 4.4 Support and develop, where necessary, resources that enhance instructional quality.

Assessment and Institutional Effectiveness

Demonstrate the effectiveness of programs, services and operations at Southern State for continuous quality improvement and accountability to students, citizens, businesses and industries and Ohio's elected officials.

Goals

- 5.1 Implement a college-wide assessment plan emphasizing quantitative and qualitative measurements of learning and service outcomes.
- 5.2 Identify and define key performance measurement indicators and use those indicators as the basis for all planning activities.
- 5.3 Build organizational capacity for change to meet future challenges.



To view the comprehensive plan including the action objectives, please visit the strategic planning website at:

http://www.sccc.edu/faculty_staff/Strategic_Planning/

2007 Strategic Planning Committee

Sherry Stout
Karen Davis
Ryan McCall
Sharon Purvis
Julie Basham
Ken Holliday
Don Storer

Terry Flum
Louis Mays
Jim Buck
Annie Rankin
Nicole Roades
Angie James
John Joy

Julie Krebs
Karyn Evans
Kris Hilgeman
Tom Barley
Emily Bloom