

How to:
Add SSCC VPN
To
Mac 10.5.2 – 10.7

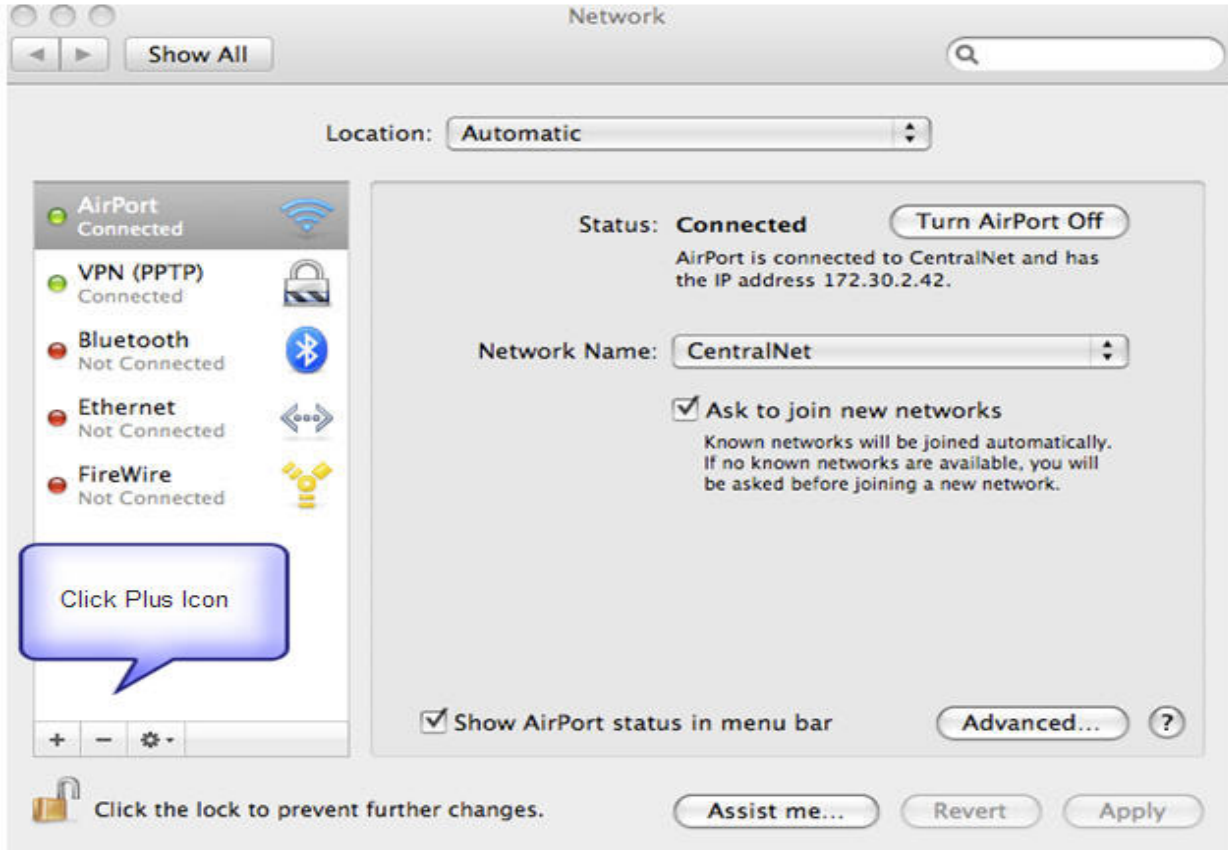
**Southern State Community College
I.T. Department**

Phone: 1.800.628.7722 ext. 2800

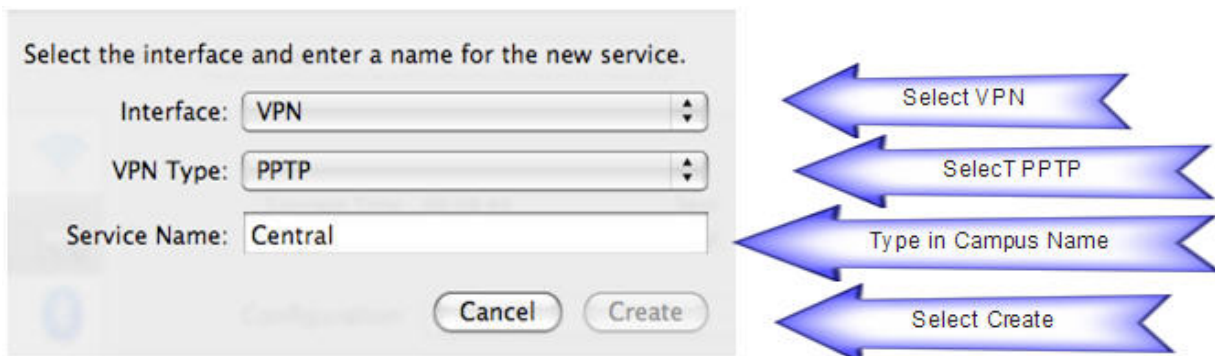
E-Mail: Support@sscc.edu

Southern State Community College White Paper
How to: Add SSCC VPN to Mac 10.5.2 – 10.7

Open Network window and then click on the Plus Icon.



- Select VPN from the Interface Option
- Select PPTP from the VPN Type Option
- Type in the Campus Name (Central, South, North or Fayette)
- Click Create



Type in the Campus IP Address

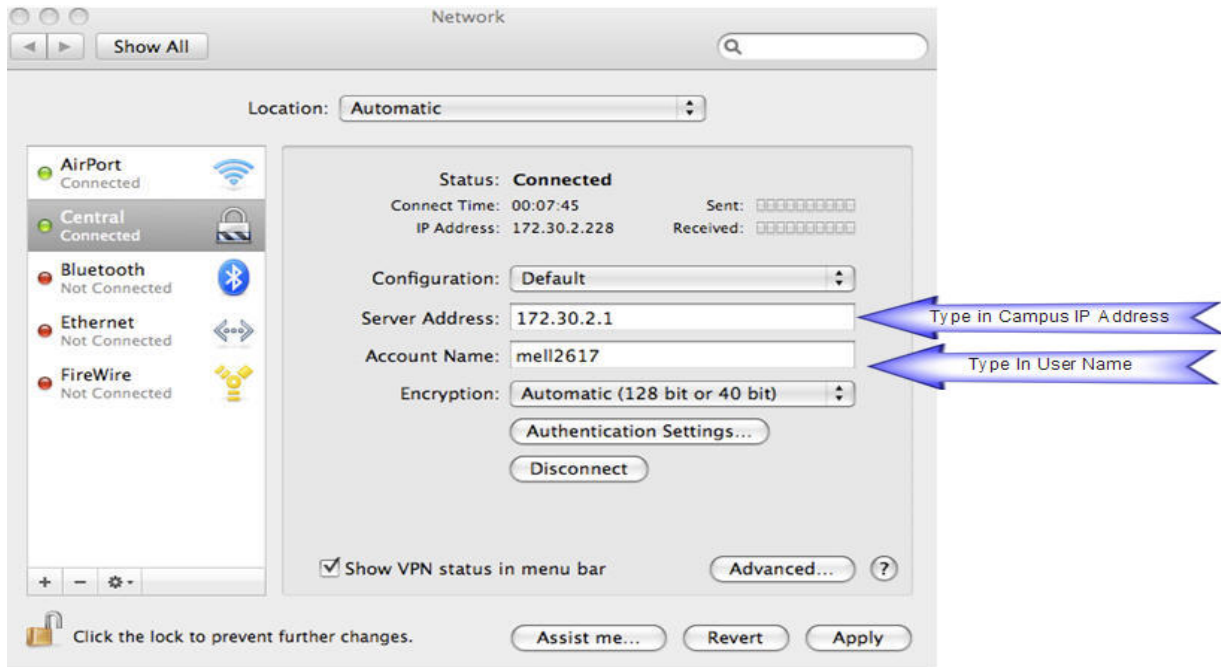
Central Campus 172.30.2.1

South Campus 172.30.0.1

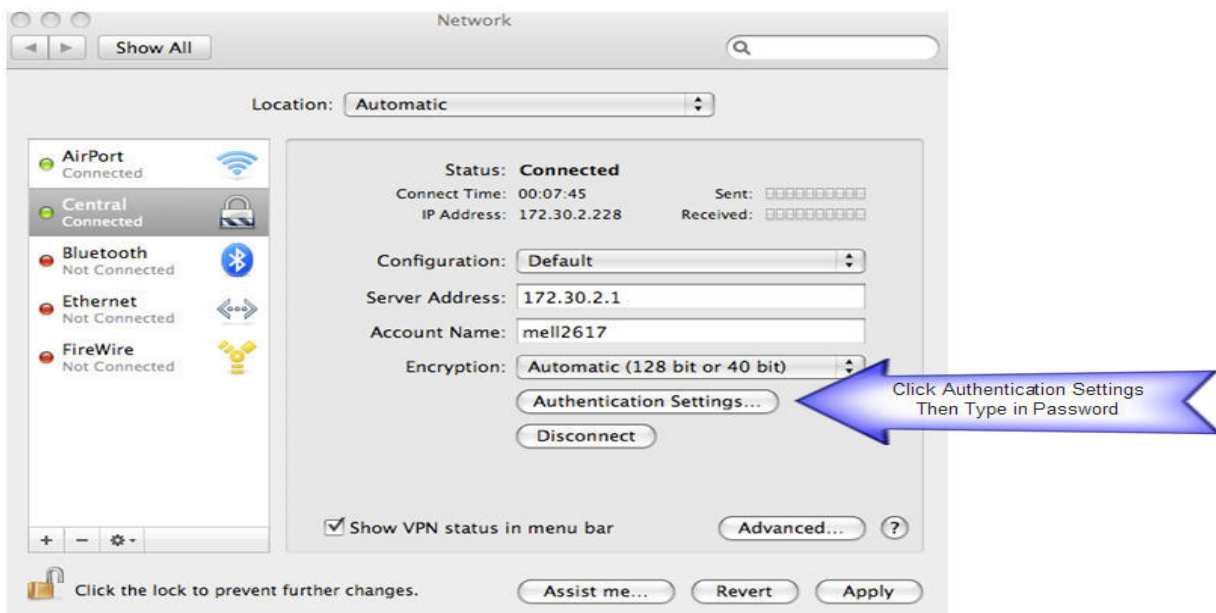
North Campus 172.30.4.1

Fayette Campus 172.30.6.1

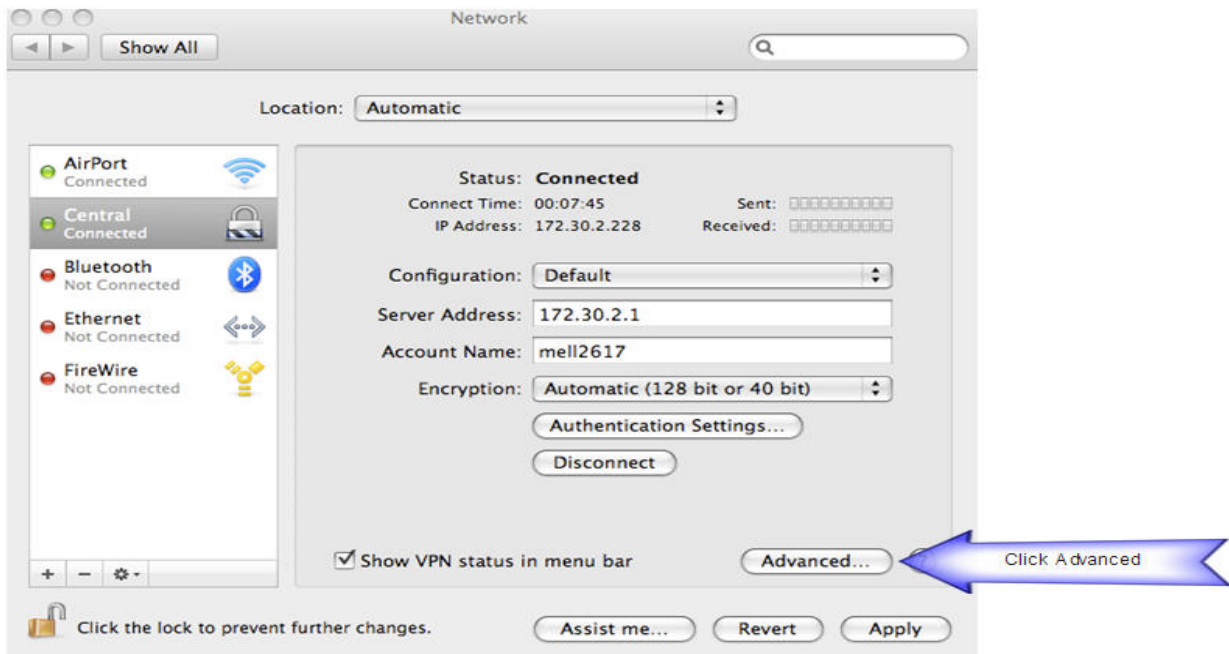
Type in the User Name



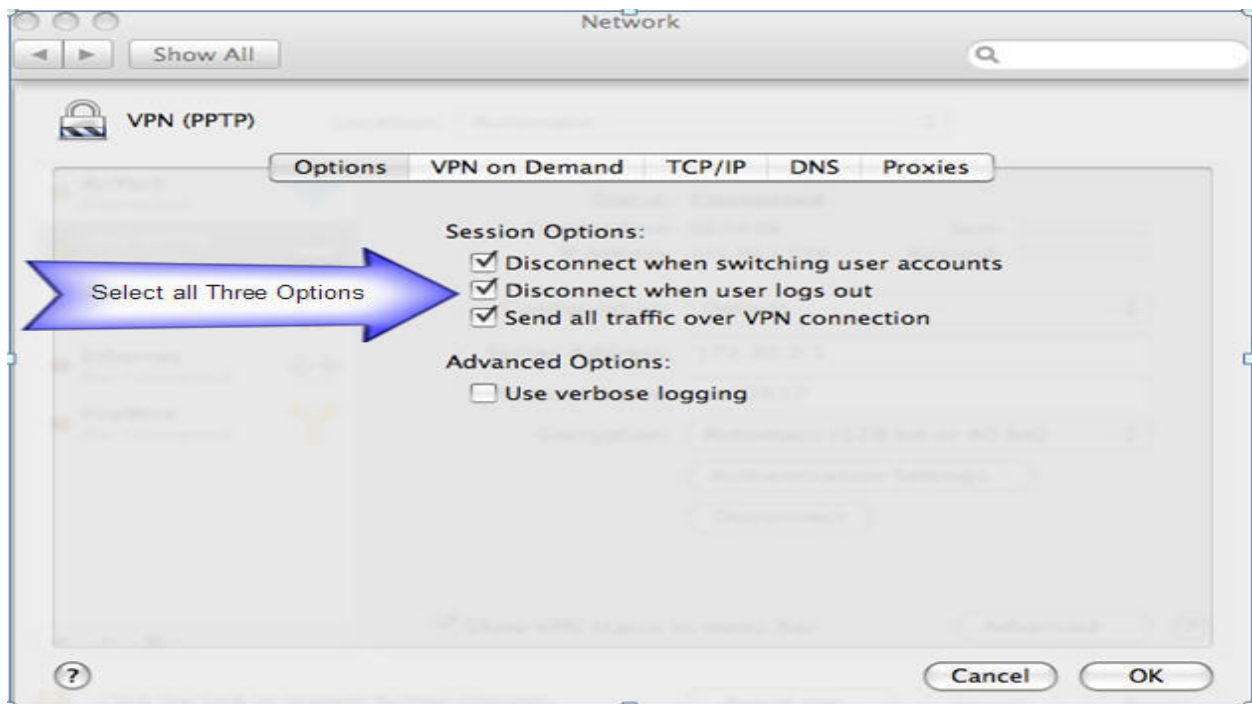
Click Authentication Settings and then type in Password



Click on Advanced

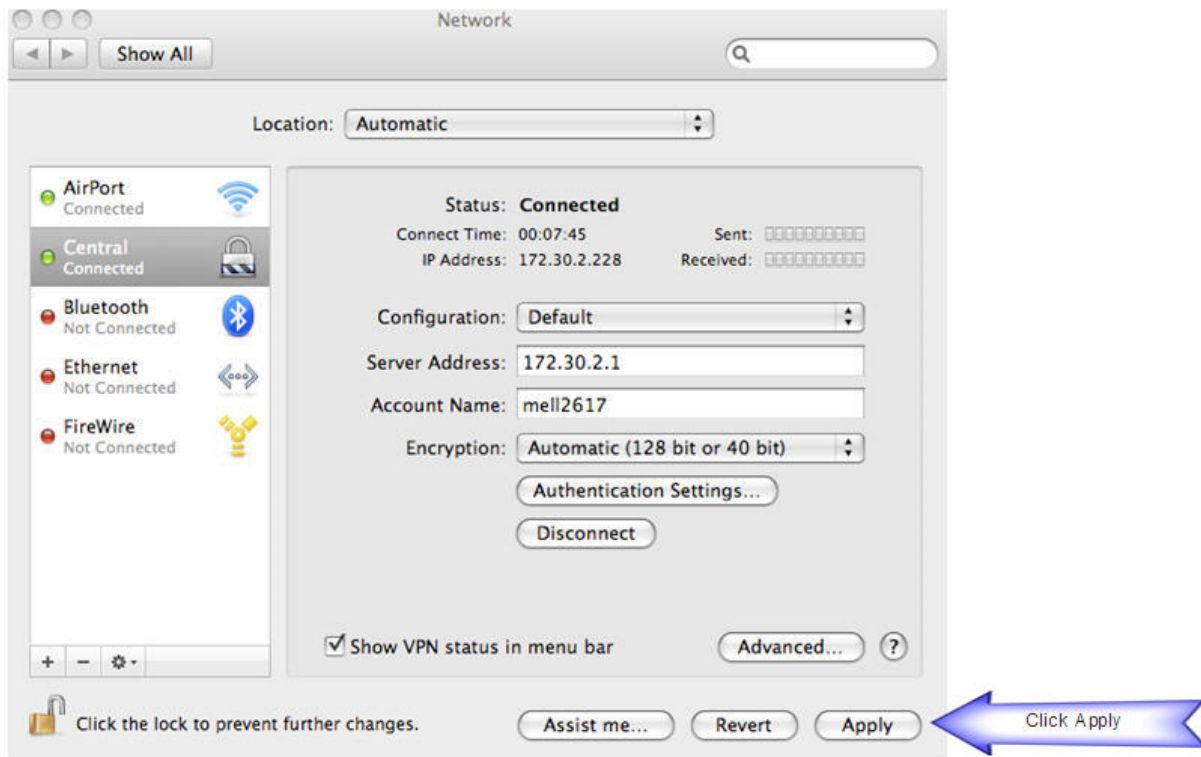


Select all Three Options



Then Click OK

Click Apply



Click Connect

Make sure the AirPort is connected and the Campus VPN is connected.

Installation is now complete!

If you have issues with any of these steps call SSCC Help Desk:
SSCC Help Desk 1-800-628-7722 Ext.2800.