

How to:
Establish a Student VPN Connection

Southern State Community College
I.T. Department

Phone: 1.800.628.7722 ext. 2800
E-Mail: Support@sscc.edu

Southern State Community College White Paper
How to: Establish a Student VPN Connection

This white paper will guide you through the process of creating a wireless connections on your personal laptop at Central, Fayette, North or South Campus.

Step (1) Connect to the Wireless Network

To access the wireless network, locate Network Connections on your pc and click on Add New Connection. If you are using Windows XP, a balloon should appear at the bottom-right side of your screen that says, “A wireless connection is now available – (“*CentralNet*”, “*FayetteNet*”, “*NorthNet*” or “*SouthNet*” will appear here).” There are many ways you can connect to the wireless network; choose the way that best suits you and your pc.

Step (2) Open Internet Explorer

In order to open Internet Explorer, you will have to find the icon labeled **Internet Explorer** and double-click it.

The icon looks like this:



Step (3) Download the VPN Client and Login

If you are successfully connected to the wireless network, your homepage will be automatically redirected to the VPN homepage for the campus you are on.

It will look like this:

The screenshot shows the Southern State Community College Help Desk page. The header includes the college logo and the text 'Help Desk'. A navigation menu on the left lists: Current Students, Prospective Students, Transfer Students, Business & Industry, Community Members, and Faculty & Staff. The main content area is titled 'How to Access the Internet at Central Campus with a Wireless Connection'. It explains that users need to download a wireless client and provides three bullet points: one for Windows 2000/XP users to download the Central Campus VPN Client, one for Windows 2000/XP users for LRC Printer instructions, and one for Mac OS X users for Mac OS X VPN Client instructions. It also includes links for a VPN Client whitepaper and instructions for North and South Campuses.

Next, you will need to download the VPN client for the Operating System and version you have. For example, if you use Microsoft Windows 2000 or XP, double-click the link that looks like this:

- (Windows 2000/XP) [Click HERE to download the Central Campus VPN Client.](#)

(Note: “Central Campus” could be replaced by “North Campus” or “South Campus” depending on which campus you are on at the time. Also, Windows 95/98/NT and ME operating systems are not VPN capable.)

If you use Macintosh OS X, you will need to click on the link that looks like this:

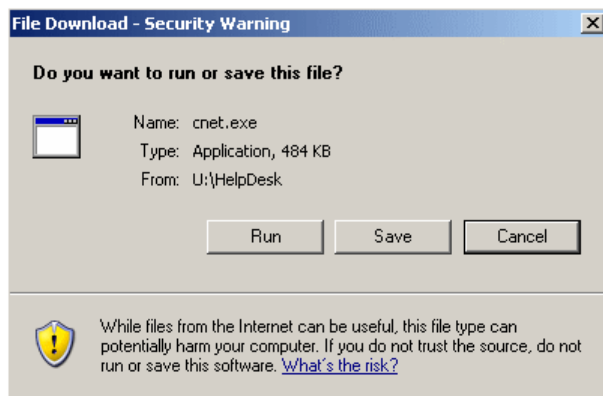
- (Mac OS X) [Click Here for instructions on how to setup a Mac OS X VPN Client.](#)

At the bottom of the VPN page, you can also download the VPN clients for the other campus’ you attend.

If you plan to access the wireless network at North Campus you will need to download this client (Windows 2000/XP) [Click HERE to download the North Campus VPN Client.](#)

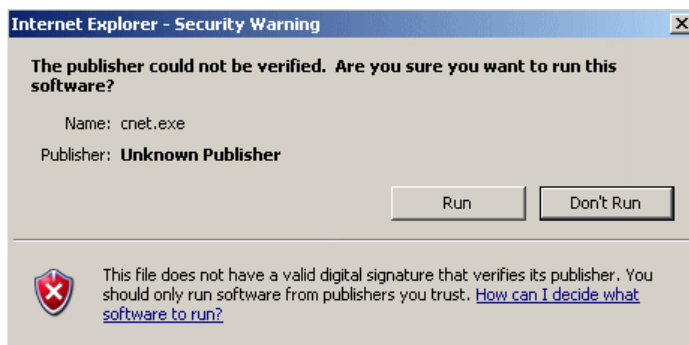
If you plan to access the wireless network at South Campus you will need to download this client (Windows 2000/XP) [Click HERE to download the South Campus VPN Client.](#)

If you are a Windows 2000/XP user, you will now see this:

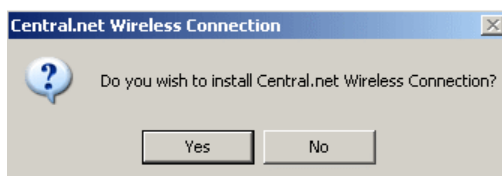


Click on "Run" to proceed to the next step.

Another box will now appear, click on "Run" again to continue.



The Install Verification box will now appear, click yes.



To personalize the installation to suit your needs, a new box will pop up asking if you would like to install this for other users on your laptop and if you would like to place an icon on your desktop. Choose what best suits your needs and click "OK".



Installation is now complete. A box will now be shown asking for a username and password. This should be the exact same as what you use for the computers at SSCC and for WebMail

You should now be connected to the Wireless Network!

If this is not the case, or if you have any questions, please feel free to contact the Help Desk at: 1-800-628-7722 Ext. 2800 for further assistance.