

Radicals Worksheet

1) $\sqrt{72}$

8) $\sqrt{216}$

2) $\sqrt{80}$

9) $\sqrt{\frac{4}{5}}$

3) $3\sqrt{75}$

10) $\sqrt{\frac{4}{5}}$

4) $\sqrt{125}$

11) $\sqrt{\frac{7}{11}}$

5) $2\sqrt{288}$

12) $\sqrt{64x^5}$

6) $\sqrt{128}$

13) $\sqrt{72x^3y^4}$

7) $\sqrt{507}$

14) $\sqrt{45a^3}$

Radicals Worksheet

15) $3\sqrt{3} + 7\sqrt{3}$

16) $3\sqrt{3} + 7\sqrt{3}$

17) $3\sqrt{4} + 7\sqrt{5}$

18) $\sqrt{8} + \sqrt{72}$

19) $8\sqrt{5} - 2\sqrt{5}$

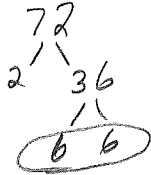
20) $4\sqrt{75} - 2\sqrt{48}$

21) $8\sqrt{54} - 3\sqrt{24}$

Radicals Worksheet

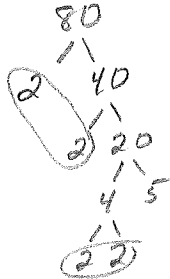
1) $\sqrt{72}$

$6\sqrt{2}$



2) $\sqrt{80}$

$4\sqrt{5}$



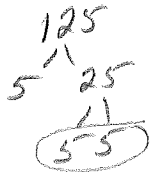
3) $3\sqrt{75}$

$3(5)\sqrt{3}$
 $15\sqrt{3}$



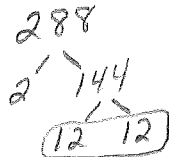
4) $\sqrt{125}$

$5\sqrt{5}$



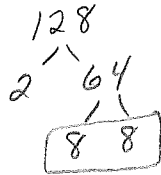
5) $2\sqrt{288}$

$2(12)\sqrt{2}$
 $24\sqrt{2}$



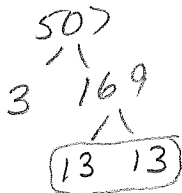
6) $\sqrt{128}$

$8\sqrt{2}$



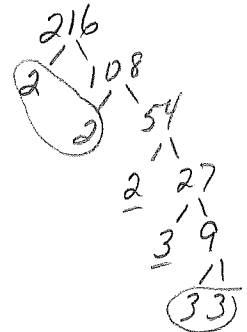
7) $\sqrt{507}$

$13\sqrt{3}$



8) $\sqrt{216}$

$2 \cdot 3\sqrt{2 \cdot 3}$
 $6\sqrt{6}$



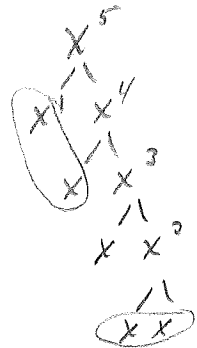
9) $\sqrt{\frac{4}{5}}$ $\frac{\sqrt{4}}{\sqrt{5}} = \frac{2}{\sqrt{5} \cdot \sqrt{5}}$
 $= \frac{2\sqrt{5}}{5}$

10) $\sqrt{\frac{4}{5}} = \frac{2\sqrt{5}}{5}$

11) $\sqrt{\frac{7}{11}}$ $\frac{\sqrt{7} \cdot \sqrt{11}}{\sqrt{11} \cdot \sqrt{11}} = \frac{\sqrt{77}}{11}$

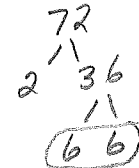
12) $\sqrt{64x^5}$

$8x^2\sqrt{x}$



13) $\sqrt{72x^3y^4}$

$6xy^2\sqrt{2x}$



$x^3 = x \cdot x \cdot x$
 $y^4 = y \cdot y \cdot y \cdot y$

14) $\sqrt{45a^3}$

$3a\sqrt{5a}$



$a^3 = a \cdot a \cdot a$

Radicals Worksheet

15) $3\sqrt{3} + 7\sqrt{3}$

$10\sqrt{3}$

16) $3\sqrt{3} + 7\sqrt{3}$

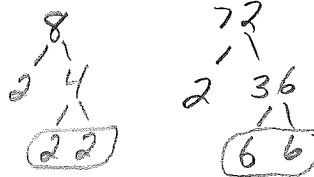
$10\sqrt{3}$

17) $3\sqrt{4} + 7\sqrt{5}$

$3 \cdot 2 + 7\sqrt{5}$
 $6 + 7\sqrt{5}$

18) $\sqrt{8} + \sqrt{72}$

$2\sqrt{2} + 6\sqrt{2}$
 $8\sqrt{2}$

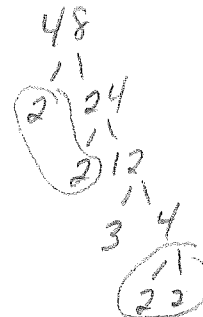
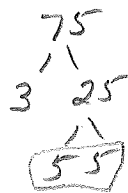


19) $8\sqrt{5} - 2\sqrt{5}$

$6\sqrt{5}$

20) $4\sqrt{75} - 2\sqrt{48}$

$4(5)\sqrt{3} - 2(4)\sqrt{3}$
 $20\sqrt{3} - 8\sqrt{3}$
 $12\sqrt{3}$



21) $8\sqrt{54} - 3\sqrt{24}$

$8(3)\sqrt{6} - 3(2)\sqrt{6}$
 $24\sqrt{6} - 6\sqrt{6}$
 $18\sqrt{6}$

